

INTERNATIONAL PATIENTS

INFORMATION BROCHURE

CHIREC HOSPITAL GROUP



'THE STRATEGIC CENTRE FOR YOUR MEDICAL CARE IN BELGIUM'

Belgium's
strength
in medical
care:



INTERNATIONAL PATIENTS UNIT

Mrs. Mirna SAYEGH

Coordinator of the International Patients Unit

☎ +32 2 434 55 51 / +32 478 812 817

✉ mirna.sayegh@chirec.be

Mrs. Kira BOBRUSHKIN

Secretary of the International Patients Unit

☎ +32 2 434 55 58

✉ kira.bobrushkin@chirec.be

The International Patients Unit is located at Delta Hospital

Boulevard du Triomphe, 201 – 1160 Brussels

✉ patients.international@chirec.be

- Brussels is ideally situated : 1h20 from Paris, 1h50 from London and 2h30 from Amsterdam.
- Capital of Europe, Brussels is home to many international companies and European institutions.
- Brussels is also well-known for the beauty of its historic buildings and the magnificence of its museums.
- Belgium is renowned for the quality of care provided. Hospitals boast cutting-edge technology and employ highly qualified staff.
- Belgium is internationally recognised for its eminent scientists and physicians.
- The hospital network, the private medicine system and the excellent ratio of doctors to inhabitants (more than 4 doctors per 1.000 inhabitants) ensure swift and efficient treatment and minimize the waiting lists.
- Medical care accessible to all. Patients are also free to choose their own physician.

HOSPITAL LANDSCAPE OF CHIREC

CHIREC, also known as “Centre Hospitalier Interrégional Edith Cavell” operates across 3 hospital sites, 2 one-day clinics, and 4 medical centres in Brussels and in the Walloon Brabant.

BRUSSELS:

- **Two hospital sites**

Delta Hospital (500 beds)
(Auderghem - Brussels South area)



St-Anne St-Remi Clinic (300 beds)
(Anderlecht – West of Brussels)



- **Two one-day clinics**

Edith Cavell Medical Centre (Uccle – Brussels South area) Basilique Clinic (Ganshoren – West of Brussels)



- **Three medical centres**

Park Leopold Medical Centre
(Ixelles – near European institutions)



Europe-Lambermont Medical Centre
(Schaerbeek – North of Brussels)



CityClinic Louise
(Ixelles – Centre of Brussels)



OVERVIEW IN FIGURES



1,145 beds



4,000 collaborators including 1,170 MDs



48,000 standard admissions/year



55,000 one-day admissions/year

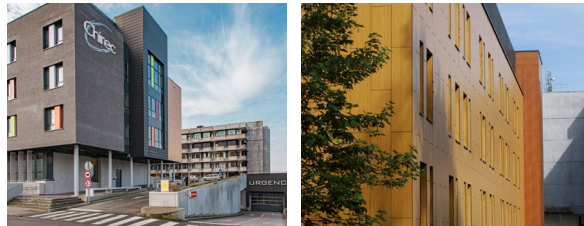


5,570 births/year

WALLOON BRABANT:

- One hospital site

Braine-l'Alleud – Waterloo Hospital (300 beds)
(20 km away from Brussels South)



- One medical centre

Jean Monnet Medical Centre
(Nivelles)





OUR MEDICAL ORGANISATION

Chirec Hospital Group offers treatments in every medical and surgical disciplines, with the exception of cardiac surgery.

Chirec also works together with other hospital institutions to enhance the quality of medical care in every field. The medical approach is multidisciplinary, while remaining personalised.

The medical organisation has progressed toward a set of innovative dual “medical doctors – nurses” clusters, enhanced by speciality departments, to better meet our patients' expectations. Patients receive therefore coordinated medical care throughout their treatment. Thanks to this personal approach, the patients are treated quickly, and are not put on waiting lists.

MEDICAL CLUSTERS



Musculoskeletal

- Orthopaedic and trauma surgery
- Hand surgery
- Physical rehabilitation
- Physiotherapy
- Rheumatology



Mother and Child

- Medically Assisted Reproduction
- Maternity Unit
- Neonatal Intensive Care
- Obstetrics
- Paediatrics
- Genetics



Visceral

- Digestive surgery
- Gastroenterology
- Gynaecology
- Urology



Thoracic and Vascular

- Cardiology
- Pulmonology
- Thoracic and vascular surgery

MEDICAL DEPARTMENTS



Acute medicine

- Emergency
- Intensive Care Unit



Anaesthesiology



Clinical Biology



Face and Neck

- Dentistry
- Ear, Nose and Throat (ENT)
- Oral and maxillofacial surgery
- Stomatology



Geriatrics



Medical imaging

- Radiology
(MRI, CT Scan, Angiography, Ultrasound, Mammograms)
- Nuclear medicine
(PET-CT, Bone densitometry, Scintigraphy, Breath tests)



Neurosciences

- Neurology
- Neurosurgery
- Psychiatry
- Pain Clinic
- Lab for sleeping disorders



Metabolic

- Endocrinology
- Internal medicine
- Nephrology



Oncology

- Chirec Cancer Institute
- Radiotherapy



Ophthalmology

CHIREC OTHER SPECIALITIES



Dermatology



Plastic surgery



OUR MEDICAL ORGANISATION

+ NURSING

The main values of the nursing department are competence, expertise, and positive communication, on a basis of caring and humanism for patients and their families.

On the request of our patients, the nursing department of Chirec Hospital Group can provide an external private nurse 24h/24. Please note that the private nursing is a paying service.

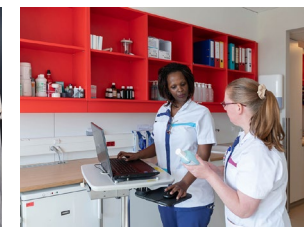
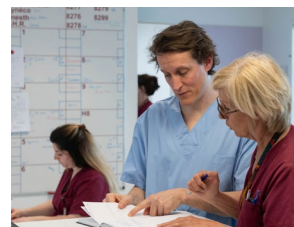
+ PARAMEDICAL SERVICES

- Nutrition
- Occupational therapy
- Physical therapy
- Psychology
- Sex therapy
- Social services
- Speech and language therapy

+ MULTIDISCIPLINARY CLINICS

Alongside the medical clusters and departments, Chirec has developed many multidisciplinary clinics such as:

- the Multiple Sclerosis Clinic,
- the Pain Clinic,
- the Obesity Clinic,
- the Travel Clinic,
- the Immuno-allergology Clinic,
- the Multidisciplinary Centre for Child and Adolescent Development,
- the Sarcoidosis Clinic,
- the Perinatal Centre, ...





ORTHOPAEDIC CENTRE

DESCRIPTION

The orthopaedic surgery department is one of the largest in Europe, with more than 17.000 surgical interventions per year.

Our surgeons are at the forefront in the development of new surgical reconstruction techniques. They also have an international recognition and have access to the latest surgical resources and technologies that allow them to offer a wide range of treatment options.

We are among the largest Arthroplasty Centres in Belgium.

MEDICAL TEAM

Our medical doctors form a blend of general orthopaedic surgeons and specialists focusing solely on foot, ankle, knee, hand, shoulder, spine disorders, sport medicine and total joint reconstructions.



HAND AND UPPER LIMB SURGERY CLINIC

DESCRIPTION

The Hand Surgery Clinic was founded in 1980 at the Park Leopold Clinic. The efficiency to hand treatments and hand injuries impose a multidisciplinary approach to specialised orthopaedic and plastic surgeons, who work in close collaboration with rheumatologists, electrophysiologists and physical therapists specialised in hand rehabilitation.

The Clinic is affiliated to the 'Fédération européenne des Services Urgences Main', which is specialised in the care and treatment of hand emergencies. Our surgeons are therefore able to handle any kind of hand emergency, 24 hours a day, 7 days a week.





BRUSSELS NEUROSURGERY CENTRE

DESCRIPTION

Our philosophy of a personalised medicine has allowed Chirec Hospital Group to become one of the leading private neurosurgical departments in Belgium.

Thanks to a continuous collaboration between neurologists and neurosurgeons, we manage to offer an approach that is both medical and surgical, while state-of-the-art equipment allows us to treat the entire panel of neurological and neurosurgical diseases.

OUR ACTIVITY IS MAINLY FOCUSED ON THE FOLLOWING SPECIFICITIES:

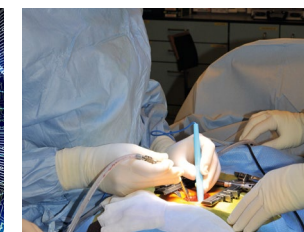
- **Spine:** Degenerative and traumatic spinal surgery, disc prostheses, complex cervical surgery, spinal cancer surgery, medullary tumours, vertebroplasty and percutaneous kyphoplasty, open or minimally invasive percutaneous spinal arthrodesis, ...
- **Skull:** Oncological surgery, gliomas, skull base tumours, hypophyseal, cranial trauma, vascular neurosurgery, aneurysm embolization, hydrocephalus, ...
- **Pain:** Treatment for Failed Backs, neuromodulation, cortical stimulation, and treatment for trigeminal neuralgia. The constant evolution of spinal surgery enables the Chirec to offer its patients, when surgery is needed, efficient treatments for cervical or lumbar disc herniation, spine arthritis, deformities and tumours. We perform most types of spinal surgery procedures from microsurgery to complex spinal fusion. To treat brain tumours, we use operative microscope, ultrasonic aspirator, neuronavigation and stereotaxy (computer-assisted surgery). This allows millimetre precision, minimally invasive surgery, and increased chances of success. The operating room (ISO 5) is equipped with state-of-the-art equipment, with a fluoroscope.

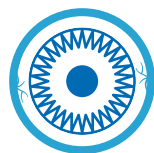
The close collaboration with the department of interventional neuroradiology and their 3D cerebral angiogram techniques enables physicians to offer endovascular treatment of aneurysms and cerebral arteriovenous malformations to selected patients, avoiding more aggressive neurosurgical procedures and shortening stays in the hospital. Patients with malignant brain or spine tumours are operated by our neurosurgeons, then referred if needed to the department of radiotherapy of the Delta Hospital or the Gamma Knife at the Erasmus University Hospital, while still being followed up by their Chirec surgeon.

The Brussels neurosurgery centre collaborates with the department of neurosurgery of the Erasmus University Hospital since 2001.

MEDICAL TEAM

The team comprises qualified neurosurgeons trained in Belgium, Switzerland, France and in the United States, specialised in various medical fields. They are members of the Société Belge de Neurochirurgie, Société de Neurochirurgie de Langue Française, American Association of Neurological Surgeons, Congress of Neurological Surgeons, Belgian Pain Society ... Neurologists and electrophysiologists specialists are also included in the team.





OPHTHALMOLOGY DEPARTEMENT

EYE CLINIC

DESCRIPTION

The Eye Clinic comprises of a team of over 40 experienced ophthalmologists, specialised in eye diseases and surgery. Among those specialists some were pioneers in the development of phaco-ablation cataract surgery and intraocular lens implantation.

The Clinic is equipped with the latest equipment allowing the specialists to practice the most advanced medical and surgical techniques.

Among these techniques, the Clinic has a major technical support comprising phaco-emulsifiers, Yag and Argon lasers, a fluoroangiography unit, a Pantacam, a Zeiss OCT, biometry equipment (Zeiss IOL-Master) and type B ultrasonography, a computerised campimeter, etc.

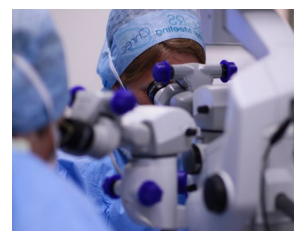
ACTIVITY

With more than 9.000 interventions per year, the Eye Clinic is a reference in Brussels.

Patients can be seen in consultations by medical doctors specialised in general ophthalmology, ocular surgery (cornea, anterior and posterior chamber), retinal pathologies, inflammatory pathologies, eyelid pathologies, paediatric ophthalmology, ...

The surgical team is particularly renowned for cataract treatment, as well as vitreous body and retinal detachment surgery: surgery using gas or silicone injection; endocular laser; epiretinal membrane peeling, ...

Every ophthalmologic emergency is being treated according to the international guidelines.





MOTHER & CHILD CLUSTER

The Mother and Child Cluster is a dedicated healthcare facility providing outstanding care to women from conception to delivery, maternity services, state-of-the-art neonatal care and a comprehensive paediatric service for both emergency, surgical and specialist care. Our highly trained professionals provide personalised care within a modern, comfortable infrastructure.

MATERNITY UNIT - OBSTETRICS

A team of over 70 highly skilled obstetrics consultants work within the Chirec Hospital Group. While we always make sure to provide personalised care, the purpose here is as well to forge links with the patient throughout her pregnancy. Moreover, our midwives complement this care by offering antenatal classes, evening information sessions about the maternity unit and breastfeeding preparation.

Foetal medicine

Our foetal medicine specialists provide a comprehensive up-to-date service for antenatal diagnosis and screening. Detailed ultrasonography, foetal MRI, genetic testing and counselling are all available within Chirec.



DELIVERY SUITES AND MATERNITY WARDS

Modern delivery suites equipped with the most up to date equipment are available in our three hospital sites. Comfortable “home from home” rooms are also available. A physiotherapist can accompany the expectant mother and her partner during delivery and the

continuous presence of on-site highly trained obstetrician, anaesthetist and paediatrician ensure optimal safety for the mother and her baby. The maternity rooms are comfortable and spacious. The partner is welcome to remain there during the stay. Our team of midwives offer follow-up care at home following the discharge from hospital. A breastfeeding consultant is also available to help out.



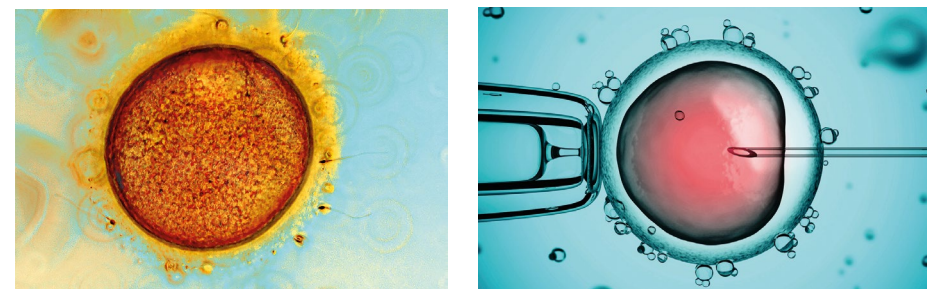
MEDICALLY ASSISTED REPRODUCTION CENTRE

With more than 30 years of experience, the reproduction centre offers a full range of fertility treatments. The team of highly trained specialists provide the latest state-of-the-art fertility treatments including IVF (in vitro fertilisation), ICSI (intracytoplasmic sperm injection), IMSI (intracytoplasmic morphologically selected sperm injection), Blastocyst culture, assisted hatching, cryopreservation of embryos and gametes, social freezing, oocyte and sperm donation and oncofertility.

A referred doctor will follow and accompany the patient throughout the whole treatment. It starts from creating the patient's file, supervising the stimulation phase, collecting gametes, reimplanting embryos and overseeing the luteal phase.

They have recently set up consultations via video conference for the international patients who would not be able to come over to Brussels.

Optional support from a psychologist: psychological support can be provided to couples.





MOTHER & CHILD CLUSTER



NEONATAL CARE

Neonatal intensive care is provided within Delta hospital. This unit is equipped with state-of-the-art technology and allows the highly trained team of specialists to provide exceptional care to babies born prematurely or suffering from medical or surgical conditions following birth. Infants are cared for in private rooms allowing a parent to remain with the child. Facilities are provided to support families throughout the baby's hospitalisation. A non-intensive "special care baby unit" is available on all three CHIREC hospital sites providing maternity services.



PAEDIATRIC SERVICES

Chirec Hospital Group provides both emergency, surgical and in-patient paediatric services. Children are cared for in age-appropriate surroundings by a team of specialised paediatric health professionals. Parents are encouraged to be involved with their child's care and are welcome to remain with their child throughout their stay. Our team of specialised paediatricians provide medical care in both general paediatrics and for a range of paediatric specialities. These include neurology, cardiology, respiratory, allergy, dermatology, nutrition, gastroenterology, pain management and rheumatology.

A team of paediatric and perinatal psychiatrists and psychologists are available to support the parents and their families from an early stage and onwards.





OBESITY CLINIC

Obesity has become a serious public health problem. Its incidence continues to rise, even among children and teenagers. The basic approach to treatment combines strict dietary measures with radical lifestyle changes.

Unfortunately, the effects of this approach are often disappointing among the morbidly obese (BMI* > 35), as the results are slow and unpredictable (yo-yo diet effect). As a result, gastrointestinal surgery is becoming one of the main treatment options. Bariatric, or weight loss surgery, owes its increase in popularity to patients' demand and to technological advances in surgery.

Surgeons perform procedures using laparoscopic techniques. This less invasive type of surgery reduces stress, cardiopulmonary morbidity (heart and lung problems) and after-effects on the abdominal wall (abscesses and ruptures), and allows any complications to be effectively monitored. Various procedures are possible, based on two principles: reducing gastric capacity (restriction) and reducing the absorption of sugar and fats (malabsorption). Some procedures combine the two. The gastric bypass has become the gold standard of bariatric surgery. It combines the effect of restriction with malabsorption.

Patients lose up to 75% of their excess weight in the year following the procedure. Quality of life is excellent and the results are stable in the long term. Patients are hospitalised for only 3 to 5 days.

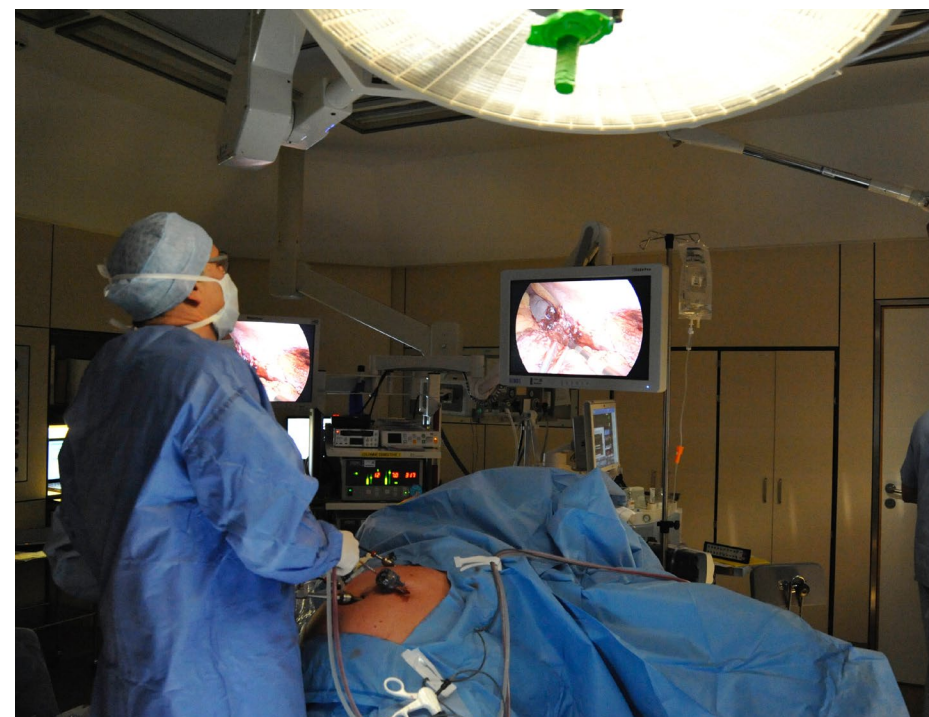
The Chirec Obesity Clinic operates in our three hospitals sites: Delta, Ste-Anne St-Remi and Braine-l'Alleud – Waterloo.

This specific unit has been created by a handful of digestive surgeons, who enjoy an international reputation in the field of laparoscopic, and particularly bariatric, surgery. The team is multidisciplinary, with specialists in nutrition, psychology, internal medicine, gastroenterology and endocrinology.

This integrated set-up guarantees the patient medical, paramedical and administrative continuity, from diagnosis to treatment and follow-up.

SPECIFIC INTERVENTIONS

- Gastric banding
- Gastric bypass (Roux- en -Y and B II)
- Sleeve Gastrectomy
- Duodenal switch
- BPD (Scopinaro)
- REDO Procedures
- Endoscopic procedures





FACE AND NECK CENTRE

DESCRIPTION

The CHIREC face and neck centre brings together approximately one hundred specialist physicians in the fields of ENT, oral surgery, maxillofacial surgery and neck surgery. The different specialists at the centre work closely with each other, and also with other related specialist fields, such as neurosurgery, microsurgery, chemotherapy, radiotherapy, speech therapy and physiotherapy, etc.

Owing to their expertise and experience, the specialists at the head and neck centre treat all disorders affecting the cephalic region, namely:

- Disorders of the oral mucosa
- Ear surgery and otoneurology
- Cranial/maxillofacial trauma
- All types of facial tumours, affecting the facial mucosa, skin and skeletal system, along with the upper airways
- Various types of facial dysmorphism (cleft palate, prognathism, retrognathism, facial asymmetry, etc.)
- Temporomandibular joint disorders
- Thyroid and parathyroid gland surgery
- Sinus surgery
- Treatment of obstructive sleep apnoea syndrome
- Cosmetic facial surgery

The CHIREC head and neck centre is equipped with advanced facilities required by the most cutting-edge medical and surgical techniques

DENTISTRY

The activity is characterized by a wide range of preserving and cosmetic care, such as :

- General dentistry - surgery
- Endodontics
- Paediatric dentistry
- Orthodontics
- Periodontology
- Prosthodontics (fixed and removable)
- Mandibular advancement splint used to treat sleep apnoea
- Implant surgery



PLASTIC SURGERY

DESCRIPTION

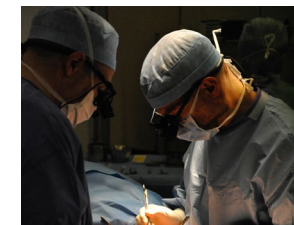
Plastic surgery is a wide-ranging medical discipline that comprises two distinct but complementary types of procedures: cosmetic surgery and reconstructive surgery. Both are widely used within all our hospitals and clinics.

All plastic surgeons at Chirec are fully trained and officially qualified as specialists in plastic surgery, both reconstructive and cosmetic. Most of them enjoy national and / or international renown.

Chirec provides its surgeons with state-of-the-art technical equipment (for both minimally invasive and invasive surgery), including microscopes, endoscopes and vibroliposuction equipment, allowing them to perform the most advanced, highly specialised and effective surgical procedures.

One of the distinctive features of the Chirec plastic surgeons is their vital liaison role with other medical and paramedical disciplines regarding various aspects of patient care, such as:

- Multidisciplinary consultations in the context of the breast treatment, skin or face and neck tumours;
- Multidisciplinary treatments in the case of reconstruction after some types of trauma or cancer;
- Aesthetic treatments involving dermatologists and medical cosmeticians.





CHIREC CANCER INSTITUTE (CCI)



DESCRIPTION

In early 2018, the Chirec Cancer Institute (CCI) celebrated its 10th anniversary. It was created to structure and develop the activity in oncology at Chirec, while setting up a quality process.

ACTIVITY

With some 5.000 patients treated each year, the Chirec Cancer Institute is one of the largest private cancer centres in Belgium.

The clinical activities are as much in conventional hospitalisation, during the surgery, as in one-day hospitalisation for the medical treatments: more than 6.000 chemotherapies are administered each year.

MULTIDISCIPLINARY APPROACH

The Chirec Cancer Institute is organized in 2 services (medical oncology and radiotherapy) and 13 multidisciplinary clinics corresponding to the various sectors of oncology and bringing together medical doctors, nurses and paramedics. Each clinic has a large multidisciplinary dimension, collaborating with many doctors from the different medical clusters and departments. Diagnostic and therapeutic procedures are discussed during the multidisciplinary oncology consultations (Concertations Oncologiques Multidisciplinaires, also known as 'COMs'), before and after treatment.

A NEW MULTIDISCIPLINARY CLINIC AT THE DELTA HOSPITAL

Since April 2018, patients have the opportunity to make an appointment at our new Cancer Prevention and Screening Clinic. Nowadays, not all cancers can be avoided. Nevertheless, you can take action against cancer. Prevention enables the risk of cancer to be reduced by about 30%. Screening allows the detection of a series of cancers, often at an early stage, and often even before any symptoms are apparent. Treatments are more effective then, and the chances of a cure are greater. The consultation establishes a risk profile and a series of examinations and specialist consultations to be recommended.

SPECIFIC FEATURES

- Consultation open to anyone, with or without a special cancer risk factor.
- High-quality, multidisciplinary personalised prevention and screening plan based on your risk profile.
- Organisation of a 'screening circuit' consisting of a series of examinations and specialist consultations.
- The results are centralised and forwarded to your attending physician(s).
- Objectives of affordability and transparency of costs.
- State-of-the-art technology.

The Chirec Cancer Institute offers innovative technology and treatments. In addition to a completely renewed medical imaging equipment, we have state-of-the-art equipment, such as a surgical robot and stereotaxic radiotherapy. In addition, patients' access to new therapeutic approaches is made possible through the development of clinical research protocols.

SUPPORTIVE CARE

The humanization of care is illustrated by the setting up of a supportive oncology clinic gathering all the disciplines of supportive care, as well as a close collaboration with the non-profit organisation Re-Source Delta Center, which provides a warm and welcoming space to patients, where they can find a listening ear, share experiences with former patients, receive pieces of advice from health professionals and take part in activities that promote psychological, physical, and social well-being in a relaxing environment.

Chirec Cancer Institute



for personalized care
from molecule to human



SUPPORT AND ACCOMPANIMENT

RE-SOURCE CHIREC DELTA CENTER



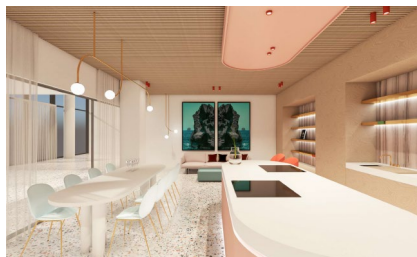
The aim of the Re-source association is to improve the quality of life of patients with cancer and that of those close to them, whether that is around the time when they receive their diagnosis, during or after the treatments.

The association supports patients and provides a warm and welcoming space for them near the hospital where they can find a listening ear, share experiences with former patients, get advice from health professionals and take part in activities that promote psychological, physical, and social well-being in a relaxing environment.

The activities offered are based on studies that all suggest that: improving nutrition, reducing stress and doing a regular physical activity, strengthens a person's chances in the fight against the disease.

The association offers a wide range of activities linked by 4 axes of support:

- **Sharing:** sharing your experience with patients and health professionals before, during and after treatments.
- **Being:** being kind to yourself, living in the present moment so that you can learn to stay calm and relaxed.
- **Moving:** practising a physical activity regularly to improve your vitality.
- **Eating:** learning how to eat healthy and delicious food to give your body and spirit the strength to bounce back.



CUTTING-EDGE TECHNOLOGY

Our specialists take part in international conferences to remain at the forefront of the latest technologies. Our staff members regularly undertake trainings to keep up with scientific advances.

The new Delta Hospital has enabled Chirec Hospital Group to acquire new equipment with the latest technology, in different medical fields:

Surgery

28 fully digitalized operating rooms, with robotic assistance, latest version of the Da Vinci Xi robot with the table motion option.

Medical imaging

Philips Azurion 7th generation intervention room: bi-plan 3D angiography, world premiere.

2 scanners including a Siemens Somatom Force of the latest generation 1 MRI Siemens Magnetom Area at 1.5T

GE Pristina mammograph equipped with 3D tomosynthesis.

6 remote-controlled, fully digitized conventional radiology tables.

9 ultrasound scanners with elastography, and microvascularization analysis.

Laboratory

Microbiology automation - HematoFlow - Multiparametric cytometry

Nuclear medicine

3 gamma cameras, 2 of which are coupled with a CT for hybrid imaging. The PET-CT is a Discovery MI (General Electric), the latest generation with digital detectors.

Radiotherapy

2 innovative electron linear accelerators: Novalis True Beam ST and True Beam Catalyst.

1 source projector for HDR brachytherapy: GammaMedplus iX.





OUR VALUES

- A **private medicine** based on a personal approach, respecting the patient's freedom of choice and offering transparent rates.
- A **multidisciplinary, patient-centric organisation**, which aims at meeting the majority of the patient's needs and at facilitating access to medical specialists.
- An exemplary, leading centre with a clear scientific nature, involved in **numerous partnerships** with universities and enjoying international recognition.
- **Competent and motivated members of staff**, who engage successfully in a large number of innovative projects and continuous training.
- **Modern medical infrastructures**, with the latest technologies for both diagnosis and treatment.
- **Comfortable accommodation**, offering a wide range of personalised services and easily accessible.



OUR PHILOSOPHY

Our philosophy is based upon the following principles:

- **A personal approach:** as a private hospital group, we put the emphasis on the dialogue between medical doctors and their patients. Throughout their whole treatment, each patient will be seen by one referring medical doctor.
- **Quality and safety:** hospital hygiene and campaigns about patients' identity monitoring are important criteria.
- **Scientific dynamism:** The CARE Foundation, a non-profit organisation, was created in 2004 under the initiative of doctors and patients of CHIREC. Its main purpose is to support researchers in their desire to innovate. Our specialists also organise regularly international conferences.
- **Consideration and respect:** we respect any decisions taken by our patients and their families about their medical care and we take into consideration any religious and cultural beliefs.



LABELS OF QUALITY

Chirec Hospital Group has been awarded a number of quality labels. Our aim is to keep up high performance:

- **"Baby Friendly Hospital"** status
- awarded to the maternity ward Edith Cavell.
- **ISO 9001**, awarded to the
- Centre for Medically Assisted Reproduction,
- Department of Nuclear medicine,
- Department of Clinical Biology.
- **Service Level Agreement (SLA)**
- Medical and technical services.
- **ISO 5 & 7**, awarded to the operating theatres.



HUMANITARIAN MISSIONS

A hospital group such as Chirec has a significant number of doctors and nursing staff, whose main purpose is to treat the population.

Beyond this, there is every year more volunteers willing to participate in our missions that are part of the values of Chirec since 2011.

Our teams that are going on mission for a period of 8 to 15 days, are composed of one (or two) anaesthetist(s), several surgeons, nurses of operating theatres and recovery rooms, nurses specialized in neonatal care or in ostomy care, and sometimes students in medicine.





FOUNDATIONS AND NON-PROFIT ORGANISATIONS



CARE Foundation

The CARE Foundation is a non-profit organisation that was created in 2004 under the initiative of doctors and patients of CHIREC.

It aims at:

- Supporting researchers in their desire to innovate.
- Developing and innovate diagnostic procedures.
- Following therapeutic innovations.
- Assessing procedures and/or surgical techniques.
- Promoting medical-scientific and technological partnerships with other medical institutions and universities, both Belgian and international.

However, a private institution can only take up the challenge with the help of private funding.



CHIRAN Foundation

The CHIRAN Foundation was founded in 2012 to stimulate and promote the continuing education of nurses of Chirec.

Our desire is to help our patients to have the best experience possible with their stay at the hospital, by giving priority to being "welcoming, competent, and empathic".

It is therefore very important that our healthcare teams have access to continuing training.

This has led to the CHIRAN Foundation "Action for Nursing", making it possible for you to contribute carrying out our main objectives.

The main objectives of CHIRAN Foundation are:

- Continuous training of nursing staff on account of developments in hospital techniques and medical specialities.
- Quality of care and the expertise of healthcare teams.
- Humanization of patient-caregiver relations during hospitalisation.
- Enhancing the image of the profession and developing the loyalty of nurses within the institution.





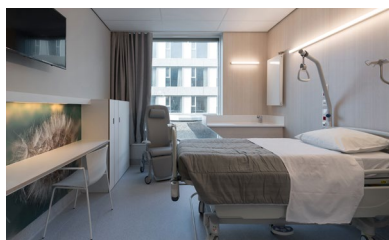
COMFORT & WELL-BEING

ROOMS

Every hospital site has private rooms, warmly decorated, with a smart-TV and free Wi-Fi.

An extra bed is available for the partner/family member accompanying the patient, at an additional cost per night.

The new Delta Hospital provide its patients 'superior rooms'.



FACILITIES

A shopping area located on the ground floor of Delta Hospital provides various care and leisure services for our patients and their visitors :

- Tasty 'Espace Gourmand' : Food – Restaurant – Take away - Room delivery - Press shop - Delicatessen - Flowers - Book shop
- Carrefour Express : grocery shop
- Pharmacy
- Bandagisterie
- Optician
- Hearing aids
- Clothing and accessories store
- ...

'SPIRITUAL ASSISTANCE'

Our team is ready to listen, whether you are a patient, or someone close to or caring for one.

The team is made up of people from different philosophical and faith groups, who can meet with you, either in your hospital room or in the welcome space on the 4th floor.

A place for meditation can be found on the 4th floor. You are also welcome there for individual recollection.








ADAGIO ACCESS BRUSSELS DELTA

120 APARTMENTS IN FRONT OF THE HOSPITAL:

- 24/7 front desk service
- Studio for 2 guests including one double bed
- Studio for 2 guests including two single beds
- Studio for 3/4 guests
- Connecting studio

Services

-  Breakfast buffet & Shop corner
-  Wi-Fi
-  Fitness
-  Laundry
-  Car Park



OUR HOSPITAL SITES

BRUSSELS



DELTA

Boulevard du Triomphe, 201
1160 Brussels



ST-ANNE ST-REMI

Boulevard Jules Graindor, 66
1070 Brussels

WALLOON BRABANT



BRAINE-L'ALLEUD - WATERLOO

Rue Wayez, 35
1420 Braine-l'Alleud

OUR MEDICAL CENTRES

BRUSSELS



Medical Centre PARK LEOPOLD

Rue du Trône, 100
1050 Brussels



Medical Centre EUROPE - LAMBERMONT

Rue des Pensées, 1-5
1030 Brussels



CITYCLINIC CHIREC Louise

Avenue Louise, 235B
1050 Brussels

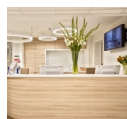
OUR ONE-DAY CLINICS

BRUSSELS



BASILIQUE Clinic

Rue Pangaert, 37 - 47
1083 Brussels



Medical Centre EDITH CAVELL

Rue Général Lotz, 37
1180 Brussels

WALLOON BRABANT



Medical Centre JEAN MONNET

Avenue Jean Monnet, 12
1400 Nivelles

THE INTERNATIONAL PATIENTS UNIT IS LOCATED AT DELTA HOSPITAL

Boulevard du Triomphe, 201 – 1160 Brussels

✉ patients.international@chirec.be